

www.madhuvan.group  
AN ISO 9001 : 2015 CO.  
madhuvan  
GROUP  
  
TM

THE SIGNATURE  
luxurious living space 

The Signature thus offers a holistic and luxurious residential experience in the lap of nature.

## THE SIGNATURE

luxurious living space 

The Signature is a magnificent residential hub with luxurious living spaces, presented by Madhuvan Group. The project includes lavish amenities including a marvellous clubhouse, game room, children play area, ample parking spaces etc.



AN ISO 9001 : 2015 CO.

[www.madhuvan.group](http://www.madhuvan.group)

Grand elevations are the signs of the times,  
with elegance defining the spectacle

LUXURIOUS ATTRACTIVE ENTRANCE...



# THE SIGNATURE

luxurious living space



Located in the leisure-filled environs,  
the homes breathe in satisfaction and completeness

ARCHITECTURE ELEVATION...



# THE SIGNATURE

luxurious living space



Experience quiet and serene evenings  
in the sensational decor and amenities

LUXURIOUS AMENITIES...



## THE SIGNATURE

luxurious living space



CLUB HOUSE



GAME ROOM



A/C GYMNASIUM



JOGGING TRACK



CHILDREN PLAY AREA



GARDEN

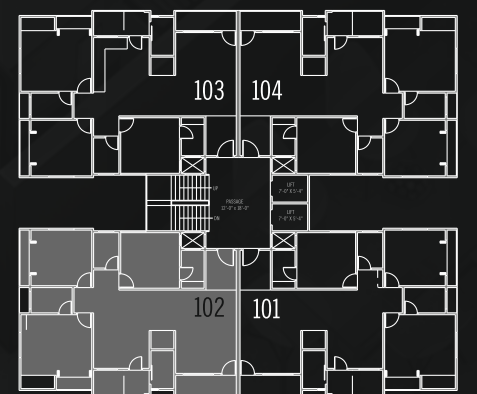


CAR PARKING



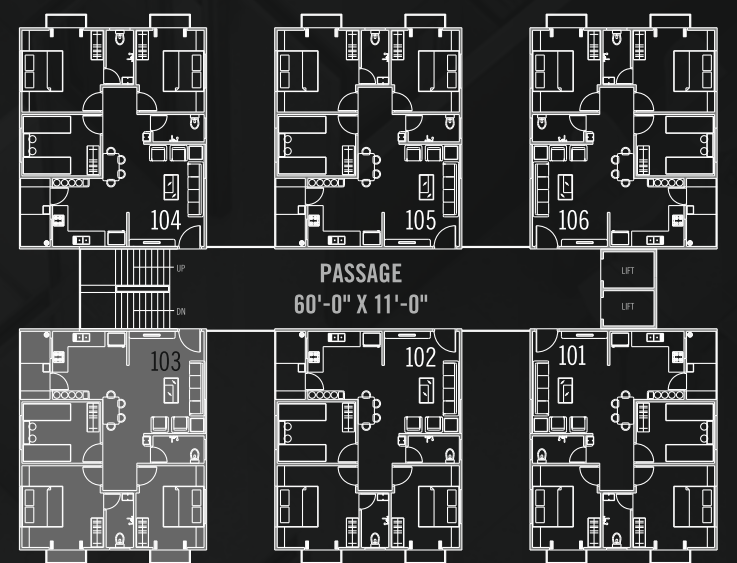
# LAYOUT PLAN





TOWER - A & B

3 BHK  
UNIT PLAN



TOWER - C

3 BHK

UNIT PLAN





## VALUABLE AMENITIES...

CCTV 


Video Door Security System 


POP Ceiling - LED Lights 

R.O. System 

Electric Geysers 

Chimney 

Two Lifts 

Power Back-up 

A plethora of amenities and facilities boost luxurious residential living to greater heights than ever!

## THE SIGNATURE

luxurious living space 



Outstanding quality brands feature in every nook and cranny, emanating class and creativity!

OUR SPECIFICATION . . .



## THE SIGNATURE

luxurious living space

### FLOORING :

- Vitrified Flooring
- Paver blocks in parking area

### KITCHEN :

- Granite top platform with S.S. sink
- Glazed tiles dedo

### DOOR - WINDOWS :

- Main door in teak wood frame or equivalent
- Good quality door in all bedrooms with laminates on both side
- Aluminum powder coating window

### COLOUR :

- Paint to exterior surface wall and Birla putty finish paint for internal wall surface.

### ELECTRIFICATION :

- Concealed wiring with modular switches
- T.V. point in living room & Master bedrooms
- A.C. point in all bedrooms
- General lighting in common areas
- Light pole in common area

### TOILET / PLUMBING :

- Sanitary ware & quality plumbing fittings
- Glazed tiles dedo with modern concept
- Ceramic tiles in flooring



CONTACT DETAIL :



# THE SIGNATURE

luxurious living space

**DEVELOPER :**  
SHELTER INFRASTRUCTURE

**ARCHITECT :**  
 **CHETAL**  
ARCHITECTS & ENGINEERS

**STRUCTURE CONSULTANT :**  
ASHOK SHAH & ASSOCIATES

MEMBER OF  
**CREDAI**  
VADODARA



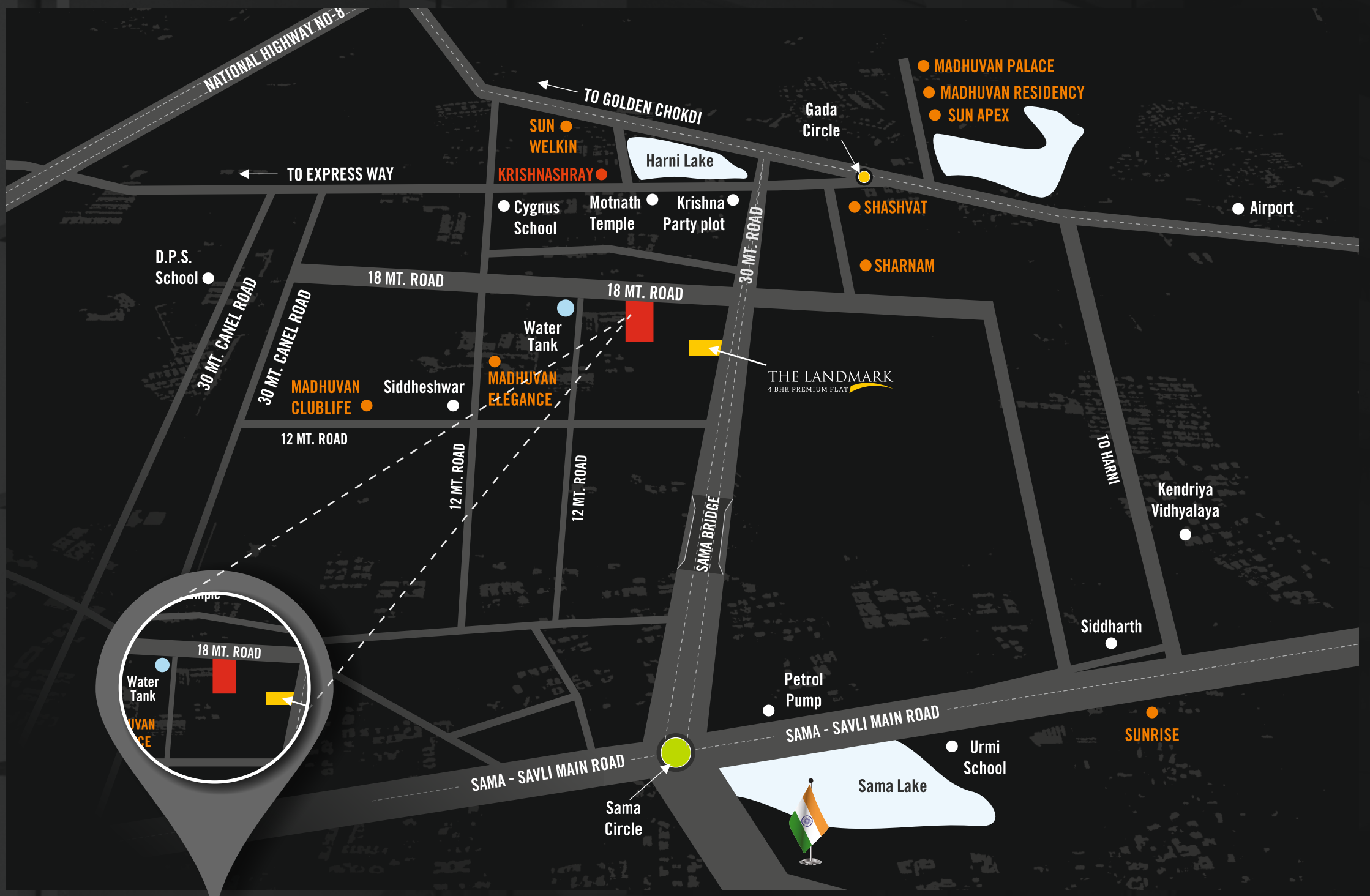
THE SIGNATURE, WATER TANK ROAD,  
BEHIND MOTNATH MAHADEV TEMPLE, HARNI, VADODARA.

CONTACT : +91 9909 804 804

thesignaturevadodara@gmail.com

www.the-signature.in

PAYMENT TERMS : 05% Booking Amount | 25% Within 15 Days Of Agreement To Sell | 10% Plinth Level | 15% 2nd slab | 15% 4th slab | 10% 6th slab | 10% 8th slab | 10% Finishing



**THE SIGNATURE**  
luxurious living space

please note :  
developers reserves the rights for alteration of specification and design. | all dimension /area approximate average & subject to variations. irregular payments shall cause cancellation of booking. VMC, MGVCL, legal expenses, GST & other GOVT charges, stamp duty & registration, maintenance charges, maintenance deposit, shall be borne by the members. this brochure is not be treated as part of the legal document it is for the easy display of the project.

disclaimer : the details, facts, specifications, figures mentioned in brochure are indicative for information purpose only and are subject to modifications/compliance required as per RERA act.

Witness residential glory in all forms and flavors,  
for a complete luxurious living experience!

# THE SIGNATURE

luxurious living space

